



# Portofino

- SERIES -



Clayton Facade



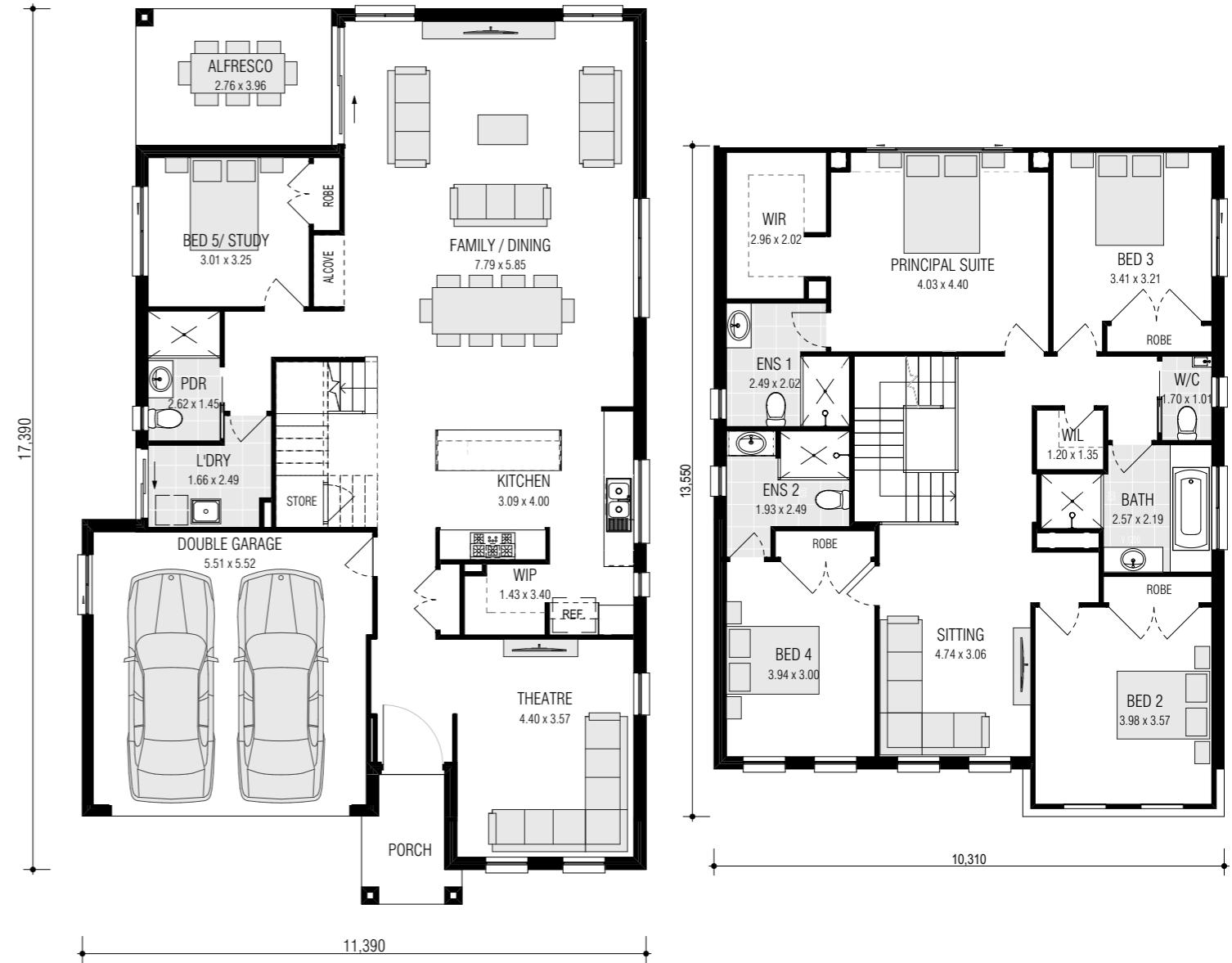
*on display*

4 HEPPEY PARKWAY, WILTON



# Portofino 33.9

FRONTAGE MIN 12.52m



Ground Floor	133.22m <sup>2</sup>
First Floor	133.31m <sup>2</sup>
Garage	33.70m <sup>2</sup>
Alfresco	10.93m <sup>2</sup>
Porch	4.35m <sup>2</sup>
<b>Total</b>	<b>315.51m<sup>2</sup></b>

5 3 2

DISCLAIMER: Photographs & Graphic impressions are representative only to finishes available and may not reflect the finish (Display Homes may vary based on design) to the standard design and may also depict fixtures, finishes & features not supplied by Firststyle Homes such as, but not limited to, landscaping & outdoor features, furnishing, decorative items, window furnishing. Dimensions are approximate only and may vary according to facade. purchasers are advised to refer to the Builders Tender and Contract for precise dimensions, specifications and inclusions. Firststyle Homes reserves the right to revise specifications, inclusions, materials and suppliers without notice. Firststyle Homes Pty Ltd ABN 59 087 773 779 B.L.113412C

# Display Home LOCATIONS

## 1. LEPPINGTON

### HOMEWORLD LEPPINGTON

17 Berkshire Circuit, Leppington NSW 2179

**PH:** 9606 4175 **E:** emeraldhills@firststyle.com.au

**ON DISPLAY:** Chatswood, Emerald, Riverside & Keswick

## 2. LEPPINGTON

### LEPPINGTON LIVING

37 Moon Street, Leppington NSW 2179

**PH:** 9608 9777 **E:** leppington@firststyle.com.au

**ON DISPLAY:** Paddington & Belrose

## 3. COBBITTY

### COBBITTY

18 Rock Fern Avenue, Cobbitty NSW 2570

**PH:** 7813 5306 **E:** cobbitty@firststyle.com.au

**ON DISPLAY:** Waverly (Dual Living), Rosewood & Sorento

## 4. WILTON

### WILTON GREENS

4 Hepper Parkway, Wilton NSW 2571

**PH:** 9043 5890 **E:** wilton@firststyle.com.au

**ON DISPLAY:** Portofino, Evendale & Clarkson

## 5. MARSDEN PARK

### HOMEWORLD MARSDEN PARK

27 Ellison Street Marsden Park NSW 2765

**PH:** 8630 0429 **E:** marsdenpark@firststyle.com.au

**ON DISPLAY:** Norwood & Montara

## 6. BOX HILL

### HOMEWORLD BOX HILL

14 Noah Street, Box Hill NSW 2765

**PH:** 8630 2020 **E:** boxhill@firststyle.com.au

**ON DISPLAY:** Grantham, Avoca & Clovelly

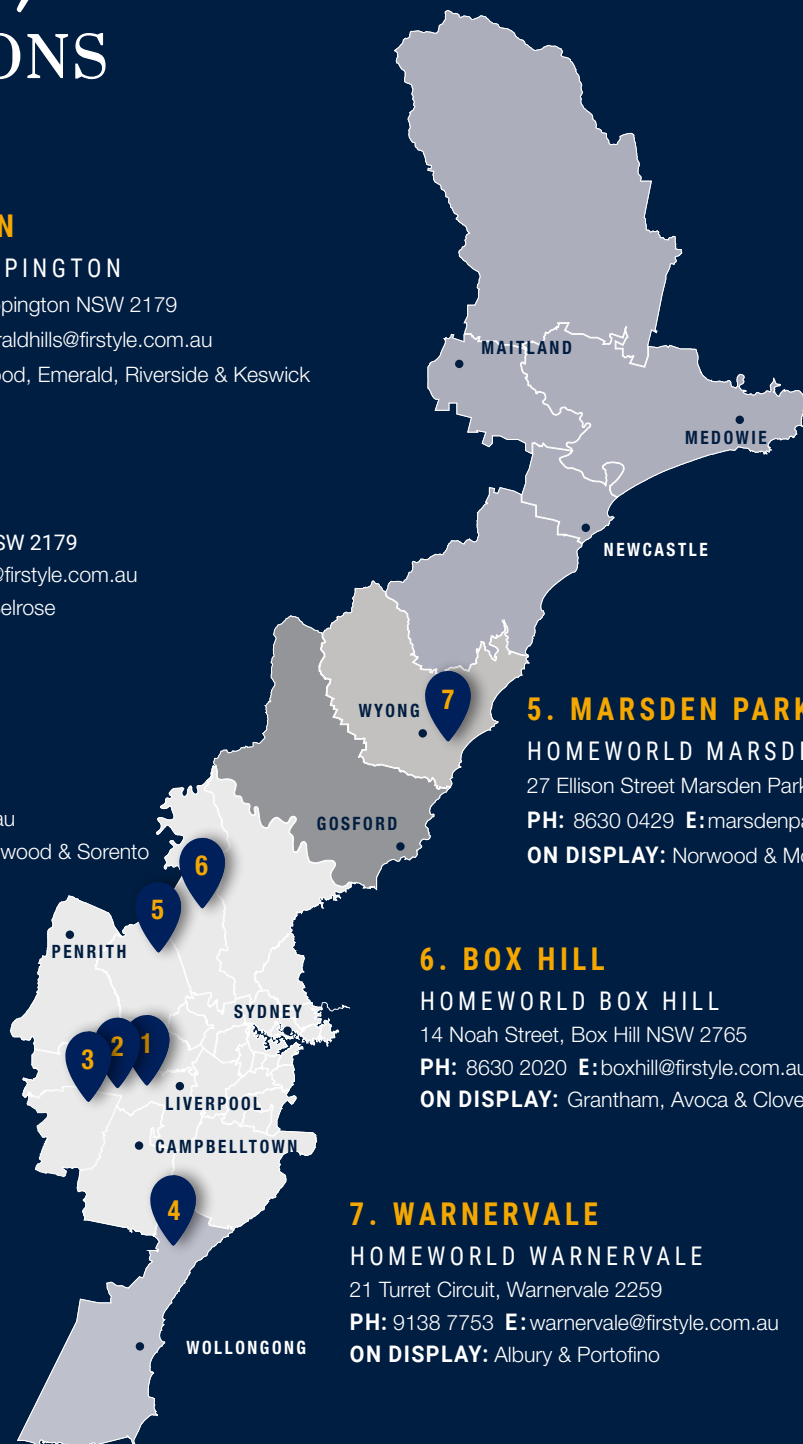
## 7. WARNERVALE

### HOMEWORLD WARNERVALE

21 Turret Circuit, Warnervale 2259

**PH:** 9138 7753 **E:** warnervale@firststyle.com.au

**ON DISPLAY:** Albury & Portofino



[WWW.FIRSTSTYLE.COM.AU](http://WWW.FIRSTSTYLE.COM.AU)

DISCLAIMER: Photographs & Graphic impressions are representative only to finishes available and may not reflect the finish (Display Homes may vary based on design) to the standard design and may also depict fixtures, finishes & features not supplied by Firststyle Homes such as, but not limited to, landscaping & outdoor features, furnishing, decorative items, window furnishing. Dimensions are approximate only and may vary according to façade. Firststyle Homes reserves the right to revise specifications, inclusions, materials and suppliers without notice.

Firststyle Homes Pty Ltd ABN 59 087 773 779 B.L.113412C | BROCHURE CREATED 29.11.24