

REDUCED TO SELL
LIMITED OPPORTUNITY



ARTIST IMPRESSION ONLY. ASPEN FAÇADE AS ILLUSTRATED.

HAMILTON 17.5

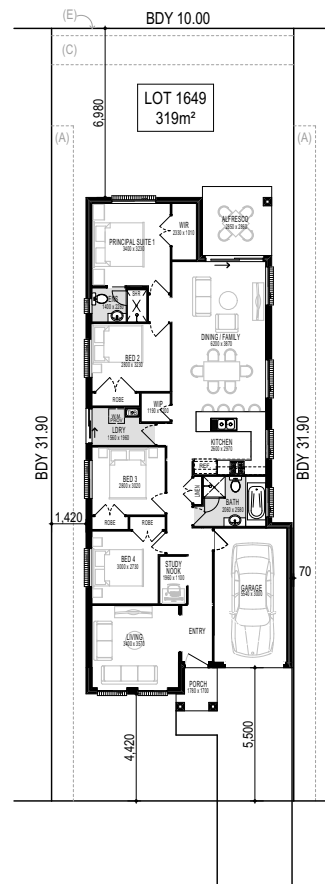
LAND SIZE: 319 m² | SQUARES: 17.5 Sq

WAS ~~\$609,900~~
NOW **\$589,900** ASPEN FAÇADE INCLUDED

LOT 1649 DONOVAN BLVD GREGORY HILLS

INCLUSIONS:

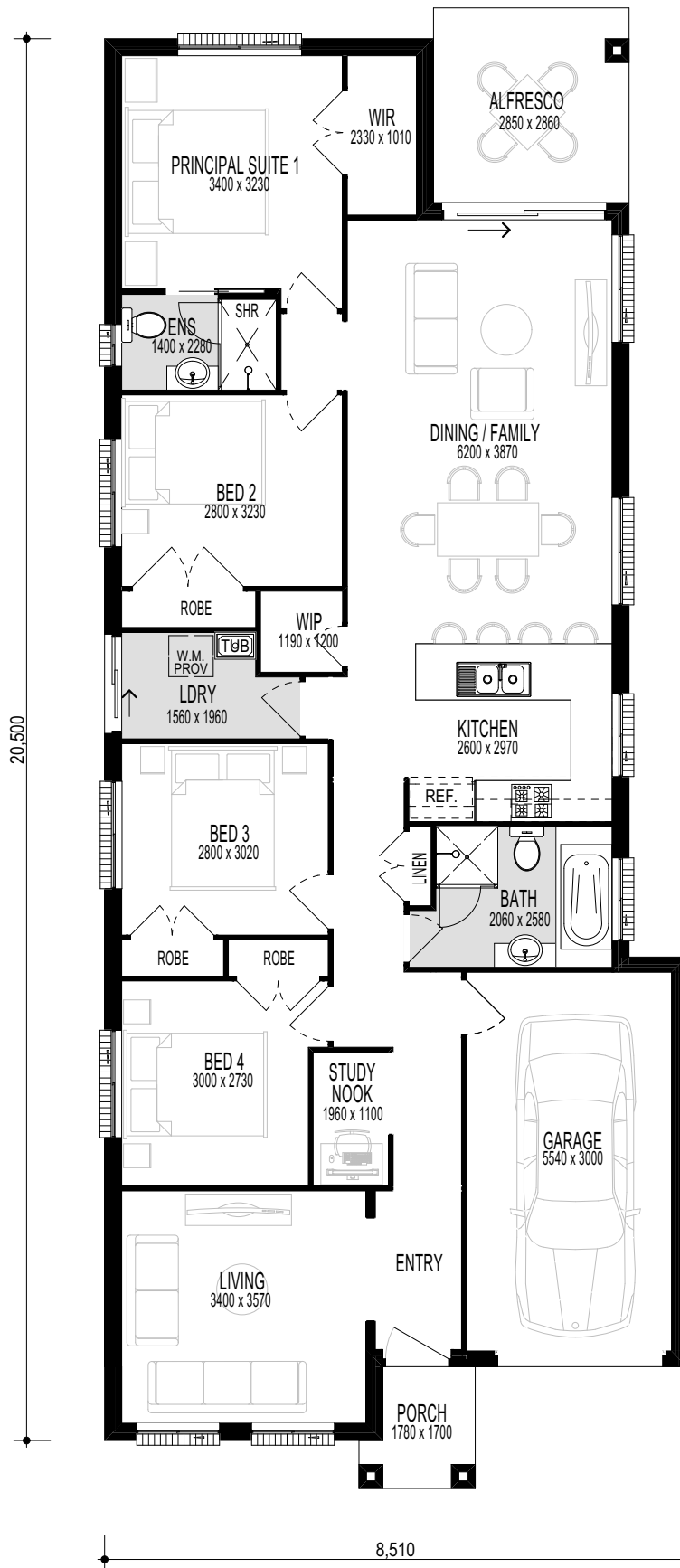
- ✓ 4 Bedrooms with Single Locked-up Garage
- ✓ Ceramic Tiling to Porch, Entry, Gallery, Kitchen, Dining/Family & Alfresco
- ✓ Carpet to Living & Bedrooms
- ✓ Natural gas package incl. Instantaneous HWS
- ✓ Fixed Site Costs & Basix Requirements
- ✓ Insulation to Ceiling & Walls (Except Garage)
- ✓ 2.59m Ceilings
- ✓ H2 Termite Treated Frame
- ✓ Coloured concrete Driveway & Pathway to Porch
- ✓ Remote Control Panel Lift Garage Door
- ✓ Stone benchtop to Kitchen & 600mm Westinghouse Appliances
- ✓ Alarm System
- ✓ 10 LED Downlights
- ✓ Video/Audio Intercom System
- ✓ Split System Air Conditioning
- ✓ LIVING INCLUSIONS*



DONOVAN BLVD

(A) EASEMENT FOR SUPPORT, MAINTENANCE & REPAIR 0.9 WIDE
(C) EASEMENT TO DRAIN WATER 1.5 WIDE
(E) EASEMENT FOR SUPPORT 0.3M WIDE





HAMILTON 17.5

firststyle.com.au

• FRONTAGE REQUIRED (MINIMUM): 9.54m • HOUSE SIZE: 162.35 m² | SQUARES: 17.5 Sq • INCLUDED: Alfresco Dining

DISCLAIMER: All plans, images and areas are indicative only. The finishes to the nominated design are to be used as a guide only. Purchases are advised to refer to the Land Contract and or Builders Tender and Contract for precise dimensions, specifications and inclusions. Firststyle Homes reserves the right to change specifications, materials and suppliers without notice. B.L 113412C 250917